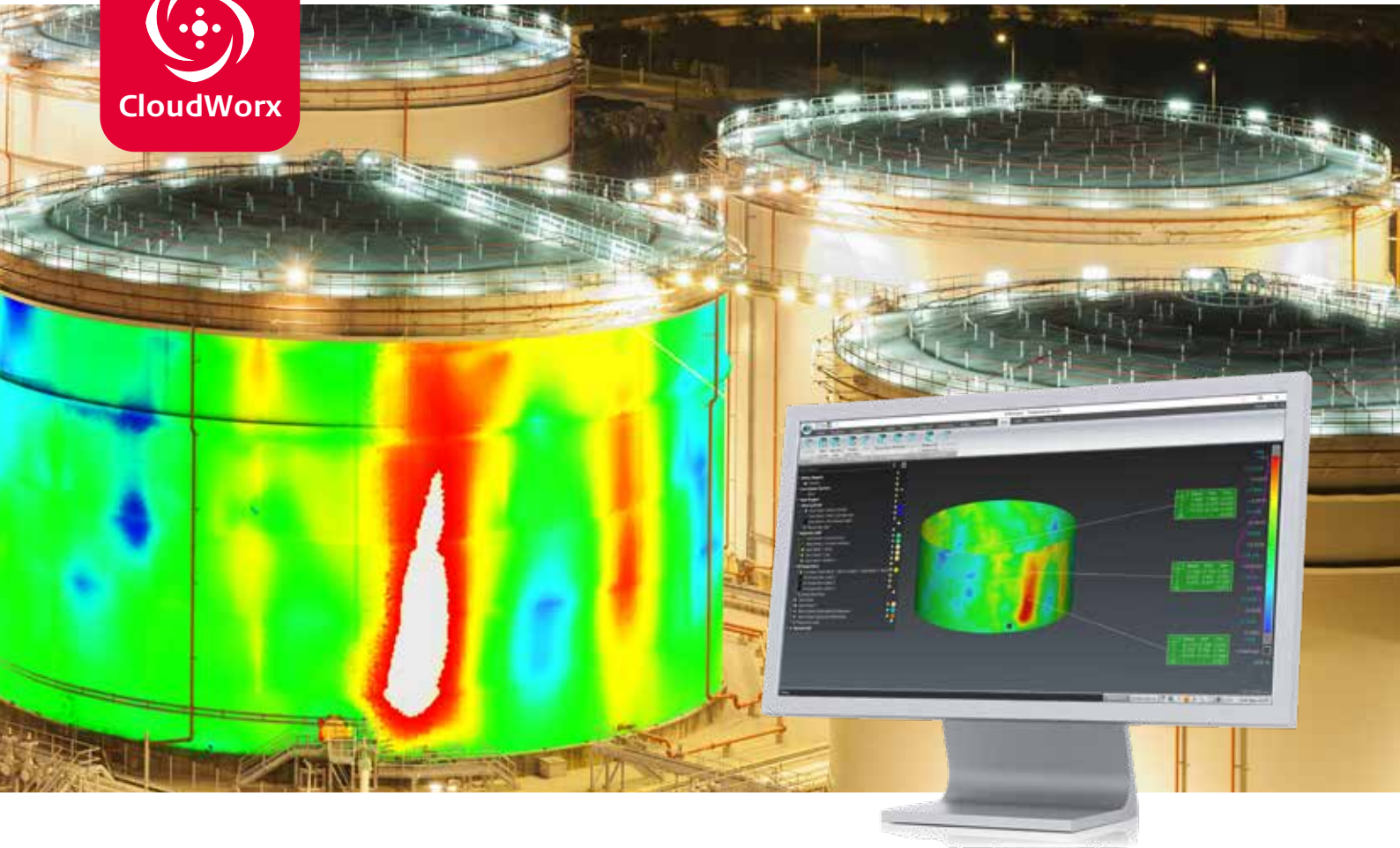


# Leica CloudWorx for 3DReshaper

Point cloud plug-in software



## Enhanced productivity

Rapidly process point clouds containing billions of points. Save time and improve productivity by skipping the export/import phase and connecting directly to Leica Cyclone or Leica JetStream databases to work with all the points, all the time. JetStream users can also collaborate on their projects simultaneously thanks to JetStream's centralised project storage.



## Seamless integration

Use the Clipping Manager to access saved clips from Leica Cyclone or any Leica CloudWorx project saved in JetStream. Take advantage of native tools within 3DReshaper and added point cloud features from CloudWorx.



## Seamless workflows

CloudWorx users benefit from seamless project access between all CloudWorx product plugins\*. Work with CloudWorx project files saved from other CAD systems to easily switch between programs and access features unique to each software.

leica-geosystems.com



**VERTICAL**  
3D

- when it has to be **right**

**Leica**  
Geosystems

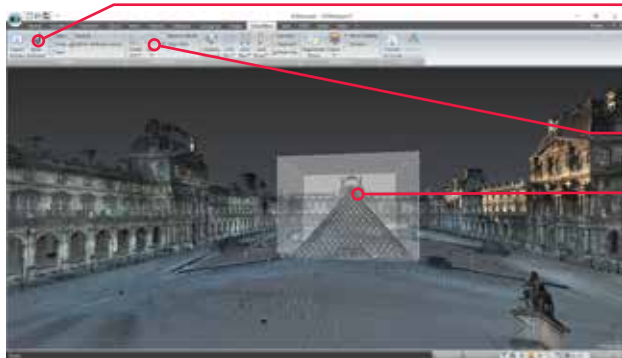
PART OF  
**HEXAGON**

# Leica CloudWorx for 3DReshaper



Leica CloudWorx for 3DReshaper is a powerful, easy-to-use software dedicated to point cloud processing and 3D meshing. It covers a wide array of applications including surface reconstruction, realistic rendering and reverse engineering for various applications: architecture, cultural heritage, geology, mining, quarrying, land surveying, tunnelling, civil engineering and more.

Thanks to the CloudWorx plug-in, load and work with Cyclone or JetStream projects directly within 3DReshaper. The CloudWorx plug-in also includes point cloud management, orientation, clipping and rendering tools to speed the process of deliverable creation.



Connect to a Cyclone or JetStream project for greater speed and performance with the added benefits of collaboration thanks to server-based project storage.

Intuitive toolset for UCS orientation support.

Clips allow users to easily hone in on areas of interest while retaining the benefits of a full point cloud.

Types of clips:

- Limit box
- Slice
- Plane

## GENERAL

<b>Point cloud management</b>	3D limit boxes, slices, interactive visualisation of massive data sets. Connects to Cyclone or JetStream for fast, efficient point cloud management
<b>Meshing</b>	Two-step meshing for superior results, smoothing, hole filling, optional decimation, sharp edge reconstruction, ground extractor, building extractor, and more
<b>Rendering</b>	Level of Detail (LOD) graphics, "Single pick" point cloud density control
<b>Visualisation</b>	Intensity mapping, True colour, and Grey scale, Limit boxes, slices, and cut planes
<b>Orientation</b>	UCS management
<b>Cyclone compatibility</b>	CloudWorx for 3DReshaper is compatible with Leica Cyclone 9.1.6 and newer

## RECOMMENDED SPECIFICATIONS

<b>3DReshaper native exports</b>	Ortho image, 3D PDF, IGES/STEP files, LAZ and .LandXML
<b>Processor</b>	2 GHz Dual Quad Core i7 processor or better
<b>RAM</b>	Minimum 8 GB or more for 64 bit OS
<b>Hard disk</b>	1 GB free disk space
<b>Graphic card</b>	Nvidia – Quadro or GeForce 1GB (with OpenGL support, versions 3.2 or higher)
<b>Operating system</b>	Microsoft Windows® 7 – 8 – 10 (64 bit supported)

\*Reference the Leica Cyclone & CloudWorx Technical Specifications document for a complete listing of product specifications.

Windows is a registered trademark of Microsoft Corporation. Other trademarks and trade names are those of their respective owners.

Copyright Leica Geosystems AG, 9435 Heerbrugg, Switzerland. All rights reserved. Printed in Switzerland – 2018.  
Leica Geosystems AG is part of Hexagon AB. 871533en - 06.18

**Leica Geosystems AG**  
Heinrich-Wild-Strasse  
9435 Heerbrugg, Switzerland  
+41 71 727 31 31

www.vertical-3d.com  
contact@vertical-3d.com  
07 67 89 20 34



- when it has to be **right**

